

# The Future of Mixing Starts Here!



**JBW Mixing Lift System • Portable Drum & Tote Mixers  
Bung Drum Mixer • SlimLine Tote Mixer**



<b>SECTION 1:</b>	<b>CAUTIONS – READ FIRST!</b> .....	page 1
<b>SECTION 2:</b>	<b>HOW IT WORKS – IMPELLER</b> .....	page 2
<b>SECTION 3:</b>	<b>TYPICAL IMPELLER CONFIGURATIONS</b> .....	page 3
<b>SECTION 4:</b>	<b>DIMENSIONAL DRAWINGS</b> .....	pages 4 & 5
<b>SECTION 5:</b>	<b>SUGGESTED INSTALLATION</b> .....	pages 6 & 7
<b>SECTION 6:</b>	<b>ASSEMBLY</b> .....	pages 8–11
<b>SECTION 7:</b>	<b>OPERATION &amp; SCHEMATIC's</b> .....	page 12
<b>SECTION 8:</b>	<b>BUNG DRUM MIXER</b> .....	page 13
<b>SECTION 9:</b>	<b>MIXING LIFT SYSTEM</b> .....	pages 14–19
<b>SECTION 10:</b>	<b>PORTABLE MIXERS</b> .....	pages 20 & 21

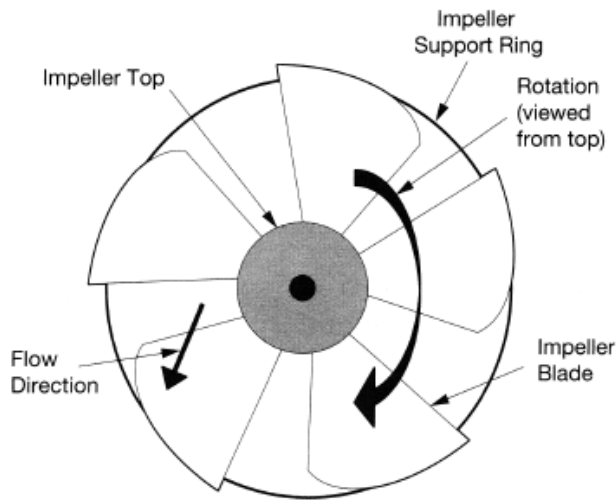


## CAUTIONS – READ FIRST

- △ **CAUTION:** The air motor on the mixing system is designed for use with a maximum of 100 psi. Exceeding this maximum rating could result in failure of the motor and/or harm to anyone in the area.
- △ **CAUTION:** Always perform an inspection of the entire mixing system before each use. Insure that all parts are in good working condition and do not show signs of wear.
- △ **CAUTION:** Do not run the air motor with shaft and impeller attached unless the impeller is submerged in the process fluid to be mixed. Running the system dry could result in vibration that could damage the unit, result in failure of the unit, or cause harm to anyone in the area.
- △ **WARNING:** When selecting a mixer for an application, you must first insure that the mixer components are compatible with the process media. All components of the JBW mixer, that come into contact with the process media, are made from 316L stainless steel.
- △ **CAUTION:** Never attempt to use or repair a damaged mixer impeller or shaft. Replace any damaged parts immediately with genuine JBW mixer parts.
- △ **WARNING:** Never attempt to modify the mixer shaft, shaft extensions or impeller. Modification will change the dynamics of the mixing system and could result in vibration that could damage the unit, result in failure of the unit, or cause harm to anyone in the area
- △ **WARNING:** Always disconnect the air supply to all mixer products before service or repairs are attempted. Failure to do so will result in rotation of mixer impeller and shaft, which could result in harm to anyone in the area.
- △ **CAUTION:** Always ensure that the mixing system is properly grounded when in use. Check with your local, state or federal regulating body for information on proper grounding procedures. Failure to do so could result in an explosion and harm to anyone in the area.
- △ **WARNING:** JBW mixers are designed for use with fluids that contain small particulate and not large solids. Use of a JBW mixing system with a heavily solids laden process media could result in severe vibration and mixer damage and/ or harm to anyone in the area.
- △ **CAUTION:** When using a JBW Mixing Lift System, the drum lid coming down on the drum's upper edge creates a pinch point that could cause bodily harm. The JBW Mixing Lift System is designed with a "two-hands down" system to prevent the operator from placing a hand in the pinch area. DO NOT tamper with, disable or remove the safety system. Modifying, disabling or removing the system will expose the equipment operators to the pinch hazard and could result in bodily injury.
- △ **CAUTION:** The JBW Mixing Lift System is equipped with a safety switch that starts and stops the air motor and impeller during the lift cycle. The safety switch engages the top rim of the drum for operation. DO NOT tamper with, disable or remove the safety system. Modifying, disabling or removing the system will expose the equipment operators to the hazard of a rotating impeller and could result in bodily injury.
- △ **CAUTION:** The JBW Mixing Lift System must be properly secured to the floor while in use. Failure to properly secure the system while in use will allow the system to fall over, potentially resulting in harm to anyone in the area and may damage the unit.

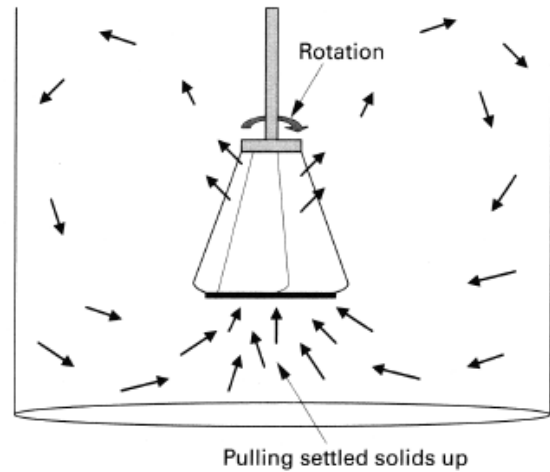


## HOW IT WORKS – IMPELLER



### Top View

The patented JBW Impeller is designed with five (5) air foil like fins. The rotation of the impeller causes these impeller fins to displace fluid in an inside-out pattern. This movement creates a vacuum on the inside of the impeller that draws the heavier, solids laden, process fluid from the bottom of the tank. A counter clockwise impeller has the impeller blades installed the opposite direction, as these impellers are mounted in the up position and designed to draw material from the top of the tank and blend it with the heavier lower layers.

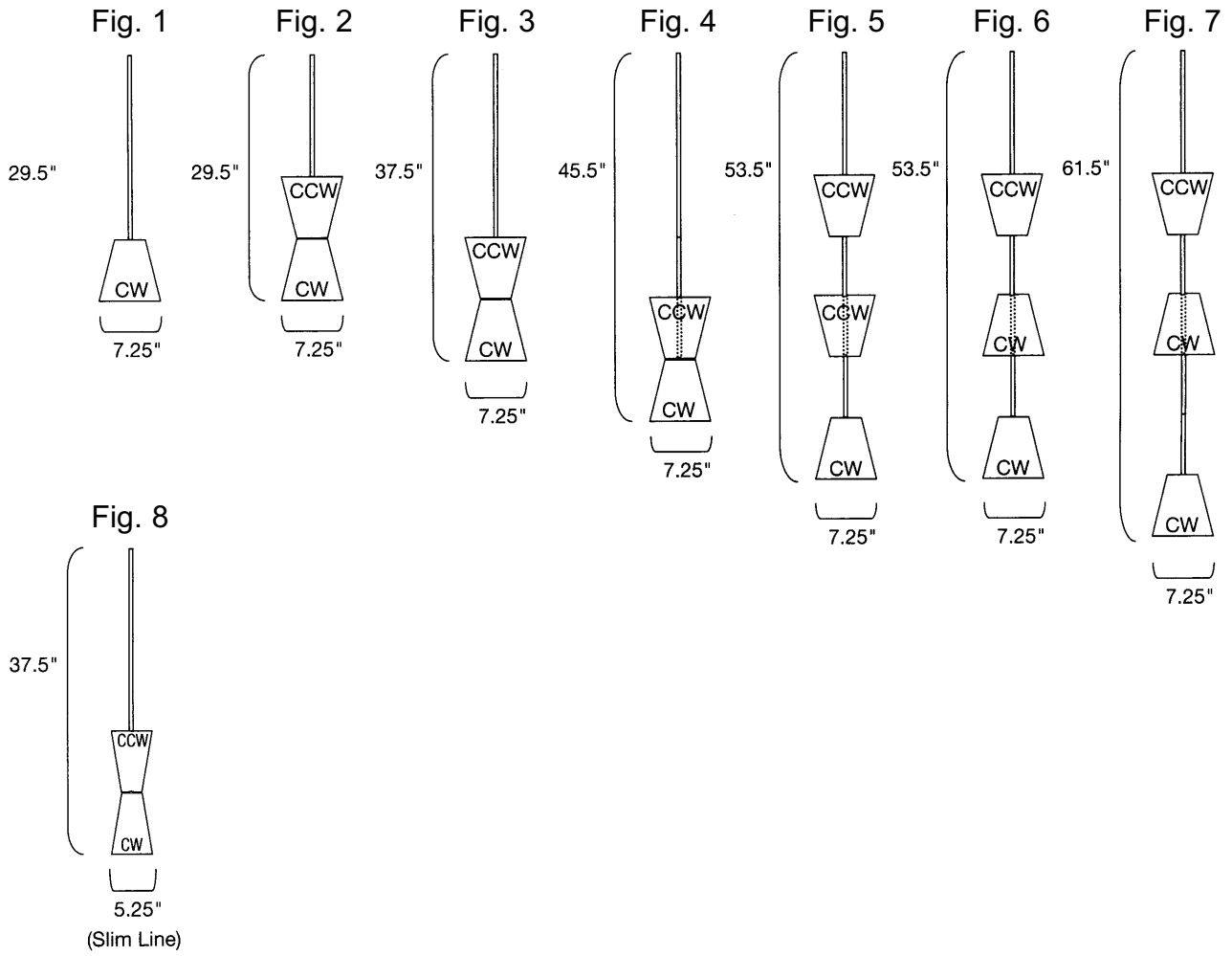


### Side View, During Operation

During operation, the patented JBW Impeller draws the settled solids up from the bottom of the drum or tote. This circulation action quickly and efficiently mixes the entire vessel. This efficiency translates into less time needed for the mixing system to run to maintain even dispersion of the solids.



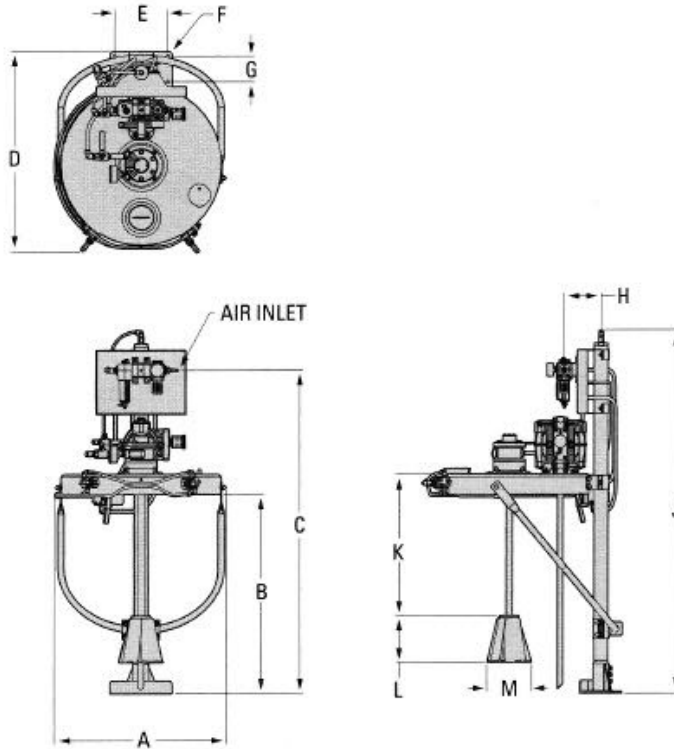
## TYPICAL IMPELLER CONFIGURATIONS





## DIMENSIONAL DRAWINGS 1

JBW Mixing Lift System

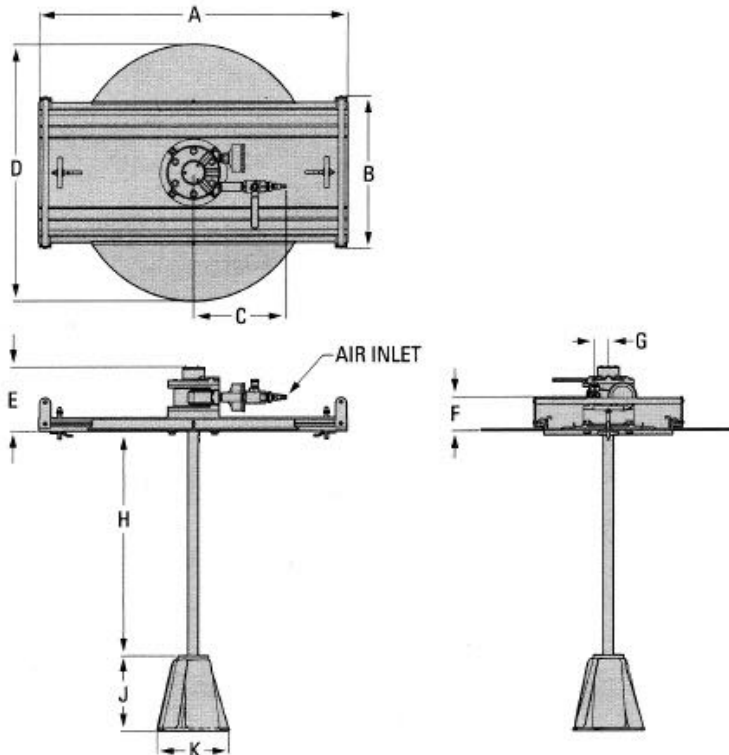


### DIMENSIONS

ITEM	METRIC (mm)	STANDARD (inch)
<b>CYLINDER - DOWN POSITION</b>		
A	681	26.8
B	787	31.0
C	1280	50.4
D	790	31.1
E	211	8.3
F	13	0.5 DIA
G	102	4.0
H	147	5.8
J	1438	56.6
<b>CYLINDER - UP POSITION</b>		
B	2096	82.5
C	2588	101.9
J	2746	108.1
<b>MAIN SHAFT &amp; SHAFT EXTENSION</b>		
K	557	21.9
<b>IMPELLER (STANDARD)</b>		
L	185	7.3
M	178 DIA	7.0 DIA

## DIMENSIONAL DRAWINGS 2

Portable Drum Mixer



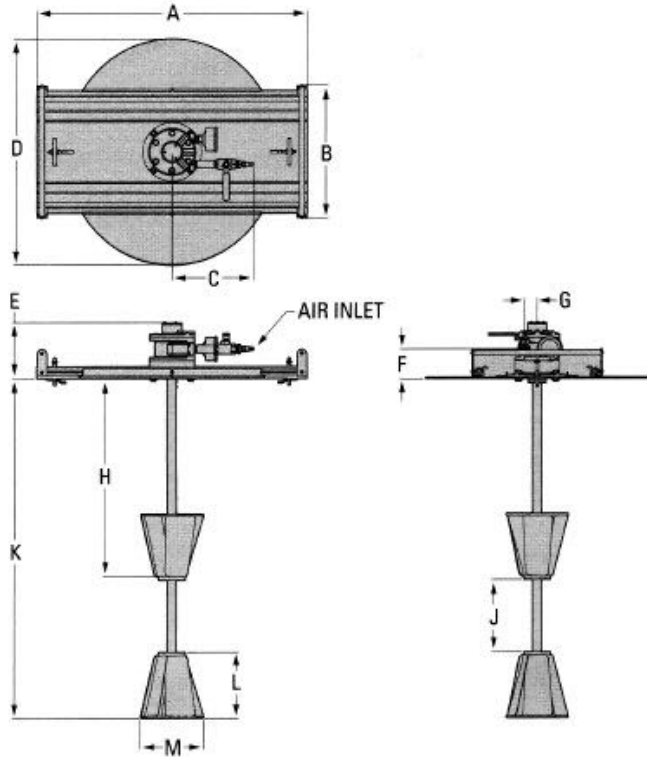
### DIMENSIONS

ITEM	METRIC (mm)	STANDARD (inch)
<b>CYLINDER - DOWN POSITION</b>		
A	762	30.0
B	373	14.7
C	229	9.0
D	632	24.9
E	157	6.2
F	84	3.3
G	36	1.4
<b>MAIN SHAFT &amp; EXTENSION</b>		
H	557	21.9
<b>IMPELLER (STANDARD)</b>		
J		
K	178 DIA	7.0 DIA



## DIMENSIONAL DRAWINGS 3

Portable Tote Mixer

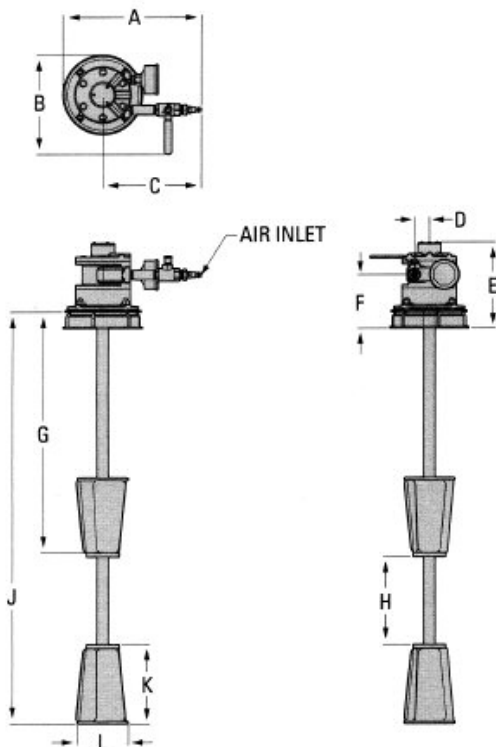


### DIMENSIONS

ITEM	METRIC (mm)	STANDARD (inch)
<b>CYLINDER - DOWN POSITION</b>		
A	762	30.0
B	373	14.7
C	229	9.0
D	632	24.9
E	157	6.2
F	84	3.3
G	36	1.4
<b>MAIN SHAFT &amp; SHAFT EXTENSION</b>		
H	557	21.9
J	203	8.0
K	953	37.5
<b>IMPELLER (STANDARD)</b>		
L	185	7.3
M	178 DIA	7.0 DIA

## DIMENSIONAL DRAWINGS 4

Portable Slim Line Tote Mixer



### DIMENSIONS

ITEM	METRIC (mm)	STANDARD (inch)
<b>CYLINDER - DOWN POSITION</b>		
A	320	12.6
B	231	9.1
C	229	9.0
D	36	1.4
E	201	7.9
F	124	4.9
<b>MAIN SHAFT &amp; SHAFT EXTENSION</b>		
G	557	21.9
H	203	8.0
J	953	37.5
<b>IMPELLER (SLIMLINE ONLY)</b>		
K	183	7.2
L	130 DIA	5.1 DIA



## SUGGESTED INSTALLATION – MIXING LIFT SYSTEM

**JBW Mixing Lift System** is designed to enhance the mixing process through superior dispersion of settled solids and ease of use for the operator. They have been designed and manufactured to the highest standards and are available with a variety of options to enhance the capabilities of the system. Care should be taken during installation and start up to ensure optimal performance of the system to avoid any hazards in the work area.

**INSTALLATION:** Premature system failure or poor performance can be avoided if reasonable care is exercised throughout the installation process. The JBW Mixing Lift System comes fully assembled and should be securely mounted to the floor with the proper fasteners to hold the weight of the system. Failure to properly secure the system could result in the system falling over which could damage the system or cause harm to anyone in the work area.

**LOCATION:** In all cases it is imperative that the JBW Mixing Lift System be installed with all safety aspects of operation in mind. Ensure that the area is clear of hoses, wires or overhead equipment that could impeded the movement of the system or prevent suitable access to the system by maintenance/production personnel.

**ACCESS:** Be sure to mount the system in an area free from hazards to the maintenance and production staff to make it easy to access the system for service and use. Should major repairs become necessary, ease of access can play a key role in speeding the repair process and reducing total down time.

**AIR SUPPLY:** All JBW Mixing Lift Systems should be mounted in close proximity to a compressed air source. The air motor for the mixer requires filtered and lubricated compressed air to operate properly. The supply line from the source should be free from debris and large enough to supply not only the required pressure but enough volume of air to perform the task.

**CONTROLS:** All JBW Mixing Lift Systems come standard with various controls for vertical operation and control of the variable speed impeller. Care and proper use of these controls will prevent user injury or system damage.

The vertical movement of the system is controlled by the up/down switches located on the front of the drum lid. The control on the left, when activated, will elevate the mixer by routing air to the pneumatic cylinder. The mixing unit will elevate so that the bottom of the impeller is above the rim of the drum, allowing for inspection, change out of the drum, or repairs. To lower the mixer assembly back into the drum, both the left and right up/down switches must be simultaneously activated and held. This will bleed air from the pneumatic cylinder, allowing the mixer unit to come down and rest on the drum's upper edge. The two hand lowering mechanism is designed to keep all hands from between the mixer lid and the drum edge.

DO NOT tamper with, disable or remove the safety system. Modifying, disabling or removing the system will expose the equipment operators to the pinch hazard and could result in bodily injury.

During vertical movement of the system, a pneumatic safety switch is used to turn the mixer air supply off when the unit rises off the drum. This switch is located on the drum lid cover and is only in the open position when the mixer has made full contact with the drum's top rim. When the mixer is raised off the drum, the switch closes the air supply to the mixer, stopping rotation. DO NOT tamper with, disable or remove the safety system. Modifying, disabling or removing the system will expose the equipment operators to the hazard of a rotating impeller and could result in bodily injury.

***ALWAYS REFER TO THE INCLUDED CAUTIONS AND SAFETY INSTRUCTIONS WHEN USING A JBW MIXER. CONSULT THE FACTORY FOR QUESTIONS NOT COVERED HEREIN.***





## **SUGGESTED INSTALLATION PORTABLE DRUM MIXER & PORTABLE TOTE MIXER**

**JBW Portable Mixers** are designed to enhance the mixing process through superior dispersion of settled solids and ease of use for the operator. They have been designed and manufactured to the highest standards and are available with a variety of options to enhance the capabilities of the system. Care should be taken during installation and start up to ensure optimal performance of the system and to avoid any hazards in the work area.

**INSTALLATION:** Premature system failure or poor performance can be avoided if reasonable care is exercised throughout the installation process. Portable Drum & Tote Mixers are manually lifted into the container. Caution should be used by the operator for proper lifting technique. Caution should be used not to hit the impeller as it is lifted into the container.

**LOCATION:** In all cases it is imperative that the JBW Portable Mixers be installed with all safety aspects of operation in mind. Since the unit is a manually manipulated system, it is imperative that access to the drums be clear of any debris or hoses that might hinder easy access for removal or repairs. Never place the drum with mixer in a position that does not provide a clear path for the operator. Placement of the system in a position that requires lifting of the system that is not bio-mechanically correct could result in operator injury. It is always recommended that two (2) people lift and move any JBW Portable Mixer.

**ACCESS:** Should major repairs become necessary, ease of access can play a key role in speeding the repair process and reducing total down time.

**AIR SUPPLY:** All JBW Portable Mixers should be mounted in close proximity to a compressed air source. The air motor for the mixer requires filtered and lubricated compressed air to operate properly. The supply line from the source should be free from debris and large enough to supply not only the required pressure but enough volume of air to perform the task.

**CONTROLS:** All JBW™ Mixers come standard with a pneumatic air motor, main shaft and patented JBW impeller. A pressure regulator, lubricator, and in-line filter to remove any particulate from the air line, is recommended for optimal performance. When the system is being serviced or removed from one drum to another, all air supply pressure to the pneumatic air motor must be removed.

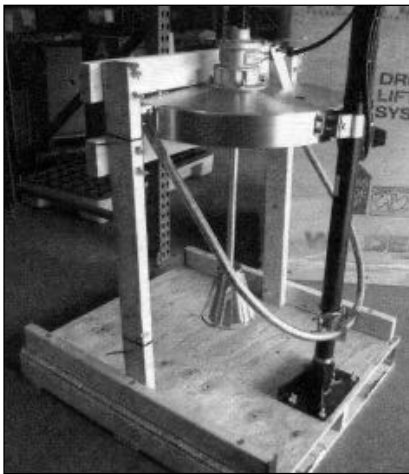
***ALWAYS REFER TO THE INCLUDED CAUTIONS AND SAFETY INSTRUCTIONS WHEN USING A JBW MIXER. CONSULT THE FACTORY FOR QUESTIONS NOT COVERED HEREIN.***



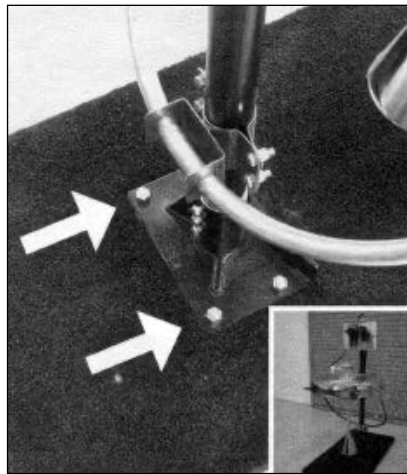
## ASSEMBLY - MIXING LIFT SYSTEM

**CAUTION:** Always disconnect the air supply to all mixer products before service or repairs are attempted. Failure to do so could result in rotation of mixer impeller and shaft, which could result in harm to anyone in the area.

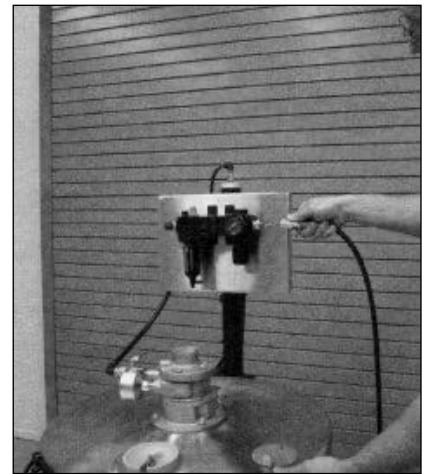
**WARNING:** Never attempt to modify the mixer shaft, shaft extensions or impeller. Modification will change the dynamics of the mixing system and could result in vibration that could damage the unit, result in failure of the unit, or cause harm to anyone in the area.



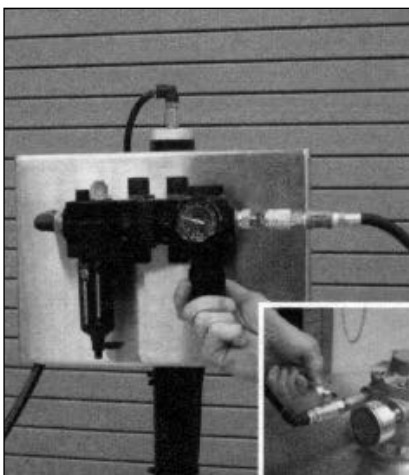
**Step 1**  
The JBW Mixing Lift System comes pre-assembled and ready to use right out of the box.



**Step 2**  
Prior to operating the JBW Mixing Lift System, secure the mixer by attaching the floor mounting bracket to a firm base such as a sturdy mounting plate or concrete floor.



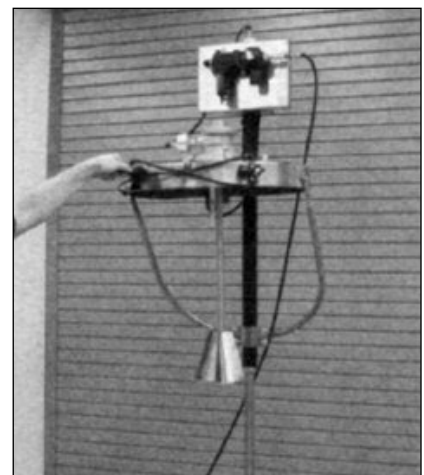
**Step 3**  
With the JBW Mixing Lift System secured, attach a 1/4" or larger air line to the inlet air regulator.



**Step 4**  
With the motor ball valve in the off position, begin increasing the air pressure by turning the regulator clockwise to obtain 90 to 100 psi. Note: The JBW Mixing Lift System will not operate with the motor ball valve in the off position.



**Step 5**  
After adjusting the inlet air regulator, move the JBW Mixing Lift System in the up position by maneuvering the LEFT up-down safety switch.

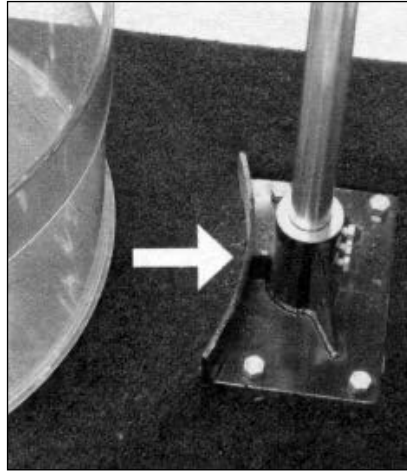


**Step 6**  
To allow for proper placement of the drum, the JBW Mixing Lift System should be in the full up position. To reach the full height, hold the LEFT up-down safety switch until the unit stops.



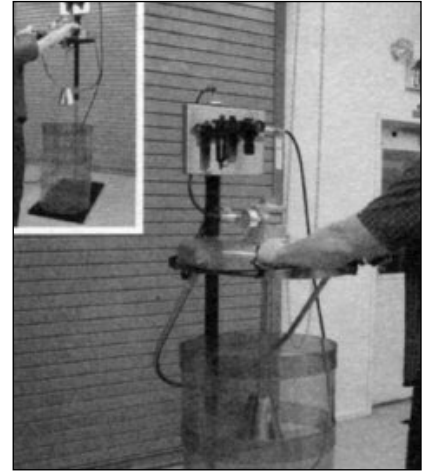
### Step 7

With the JBW Mixing Lift System in the full up position, maneuver the drum inline with the shaft and impeller assembly.



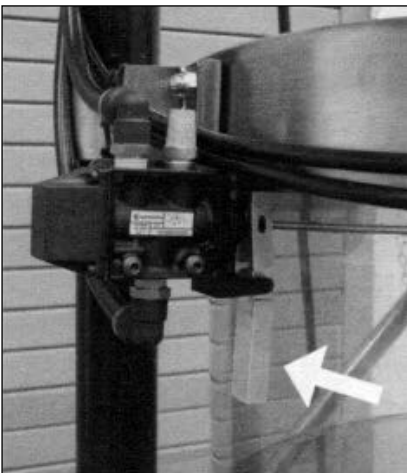
### Step 8

Prior to moving the JBW Mixing Lift System into the full down position, ensure that the drum is in the accurate location by bringing the bottom edge of the drum into contact with the concave area on the floor mounting bracket.



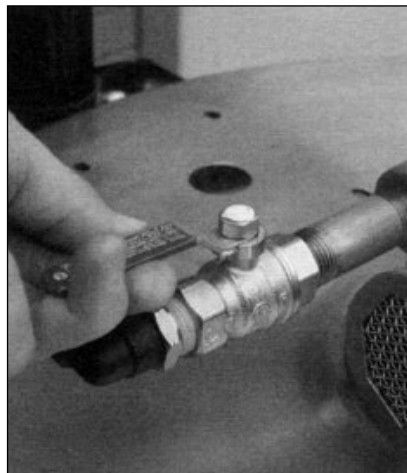
### Step 9

With the drum in the proper location, the JBW Mixing Lift System can be lowered into the full down position by grasping both up-down safety switches and actuating them simultaneously.



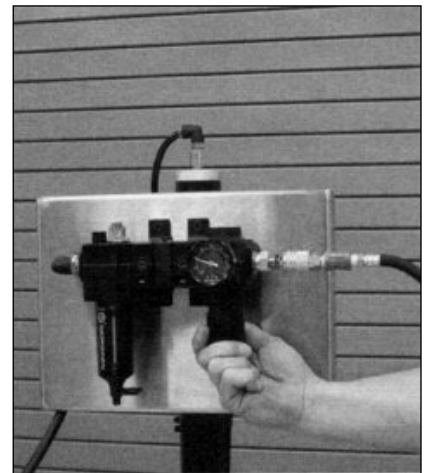
### Step 10

When the safety arm lever located on the drum cover comes in contact with the top edge of the drum, the JBW Mixing Lift System is turned on and the impeller begins to spin. When the JBW Mixing Lift System is maneuvered in the up position and the safety arm lever moves away from the top edge of the drum, the mixer is turned off and the impeller stops spinning. NOTE: The JBW Mixing Lift System will not run unless the safety arm lever is actuated.



### Step 11

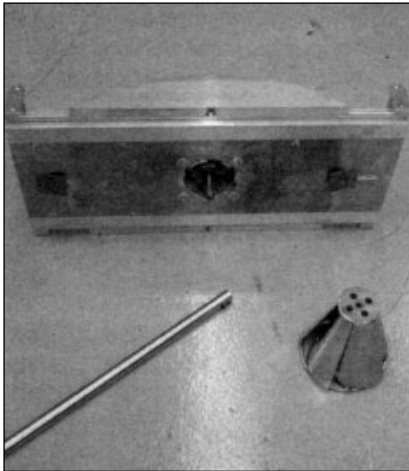
To begin the mixing process, simply position the motor ball valve in the on position. NOTE: Although the speed of the JBW Mixing Lift System can be controlled by the inlet air regulator, the preferred method for controlling the impeller speed is by adjusting the motor ball valve while maintaining 90 to 100 psi



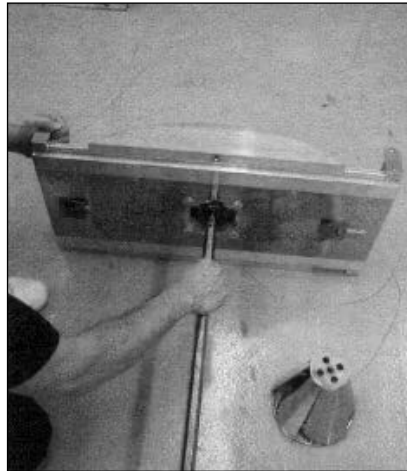


## ASSEMBLY - DRUM AND TOTE® MIXERS

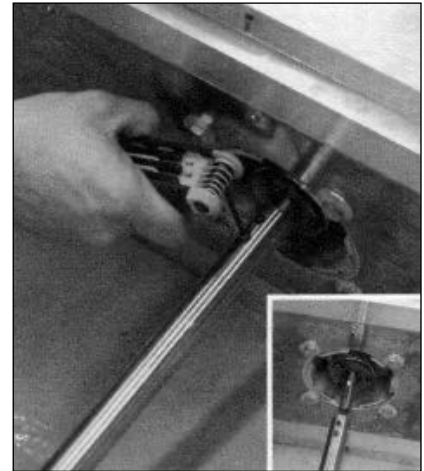
The portable drum and tote mixers are lightweight, weighing less than 50 lbs. The drum or tote mixer can be easily transported to the mixing site rather than the drum being moved to a stationary mixing system. The drum and tote mixers are designed so that the sides lift up, allowing the operator full access to the containers for placement of pumps and/or the addition of other materials.



**Step 1**  
Unlike the JBW Mixing Lift System, the JBW Drum or Tote® Mixer requires some assembly prior to use.



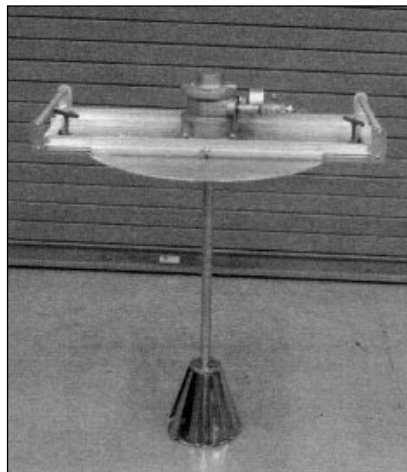
**Step 2**  
First, attach the impeller shaft to the motor spindle.



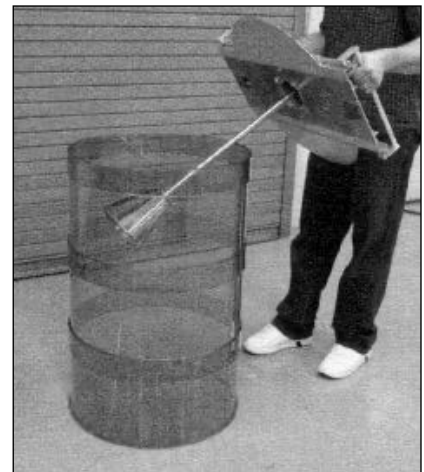
**Step 3**  
Using a hex head wrench, secure impeller shaft to the motor spindle. Note: When securing the shaft to the motor spindle, align the hex head screws with the key way. This will eliminate the possibility of the motor spindle slipping when mixing higher viscous fluids.



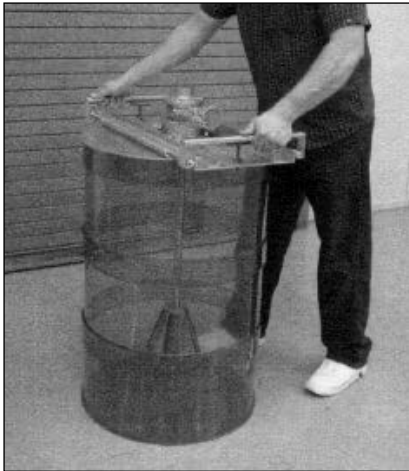
**Step 4**  
Install the impeller by threading the impeller onto the shaft with the large end facing down as shown in the picture.



**Step 5**  
The portable drum or tote® mixer can be easily transported to the drum/ tote® tank rather than the drum being moved to a stationary mixing system.



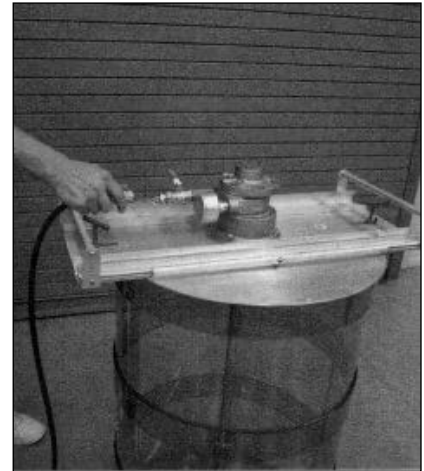
**Step 6**  
To place the portable drum mixer or tote® mixer into the drum, first grasp the handles and guide the impeller and shaft gently into the drum opening.



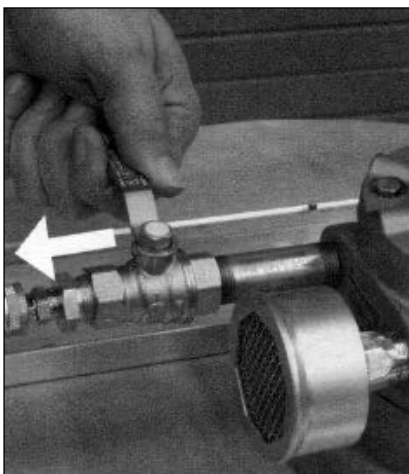
**Step 7**  
Next, position the drum cover onto the top of the drum.



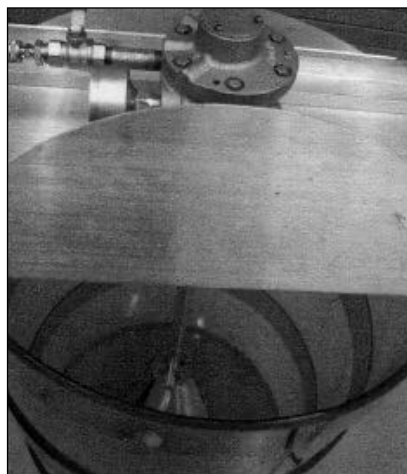
**Step 8**  
After the drum or tote® mixer is positioned in the drum, secure the mixer to the drum using the drum clamp assembly.



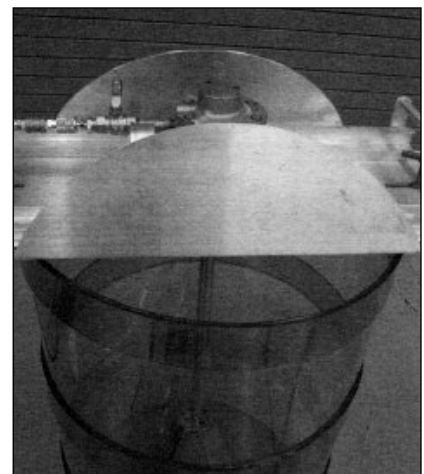
**Step 9**  
With the drum or tote® mixer is secured to the drum, attach a 1/4" air line or larger to the motor ball valve.



**Step 10**  
To begin the mixing process, simply position the motor ball valve in on position.



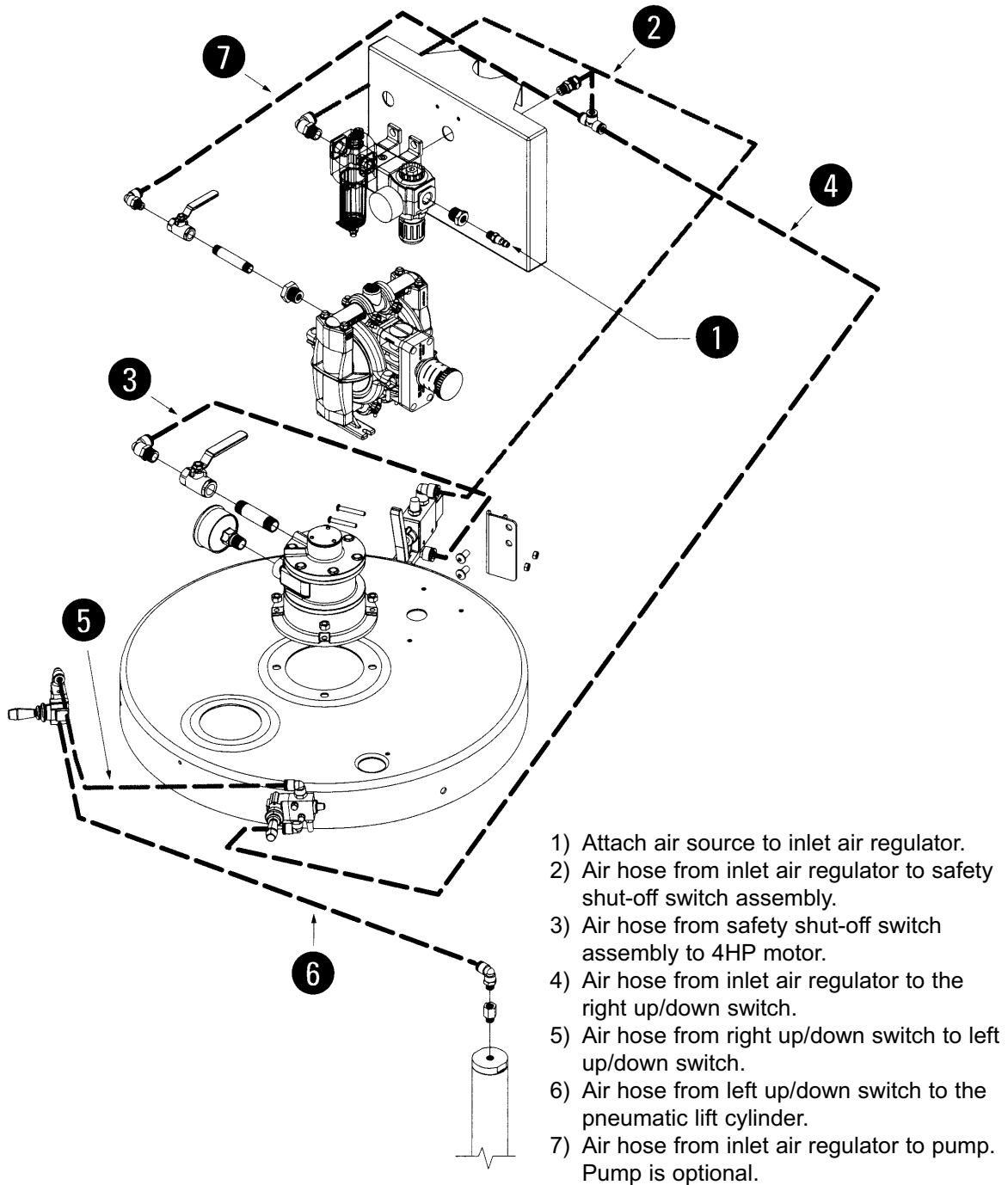
**Step 11**  
The flaps located on the drum cover assembly can be positioned upward to allow for easy access of process media.





## OPERATION & SCHEMATIC'S

### Air Line Schematic



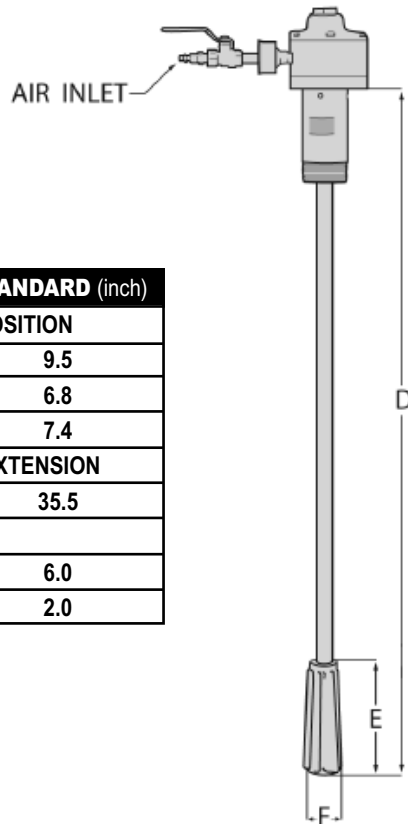
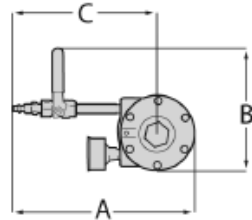
**CAUTION:** Always disconnect the air supply to all mixer products before service or repairs are attempted. Failure to do so could result in rotation of mixer impeller and shaft, which could result in harm to anyone in the area of the mixing system.

**WARNING:** The air motor on the mixing system is designed for use with a maximum of 100 psi. Exceeding this maximum rating could result in failure of the motor and/or harm to anyone in the area of the mixing system.



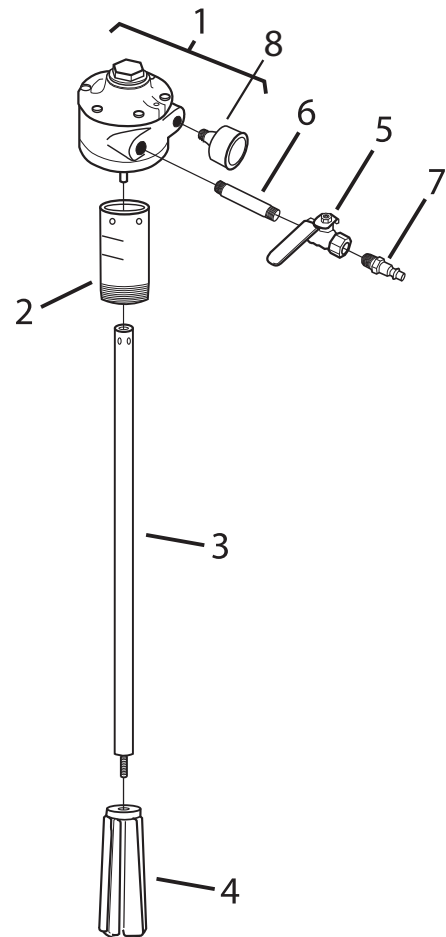
## JBW BUNG/DRUM MIXER

### Exploded View COMPLETE UNIT PARTS LIST



#### DIMENSIONS

ITEM	METRIC (mm)	STANDARD (inch)
CYLINDER - DOWN POSITION		
A	241	9.5
B	173	6.8
C	188	7.4
MAIN SHAFT & SHAFT EXTENSION		
D	901.7	35.5
IMPELLER		
E	152	6.0
F	51	2.0

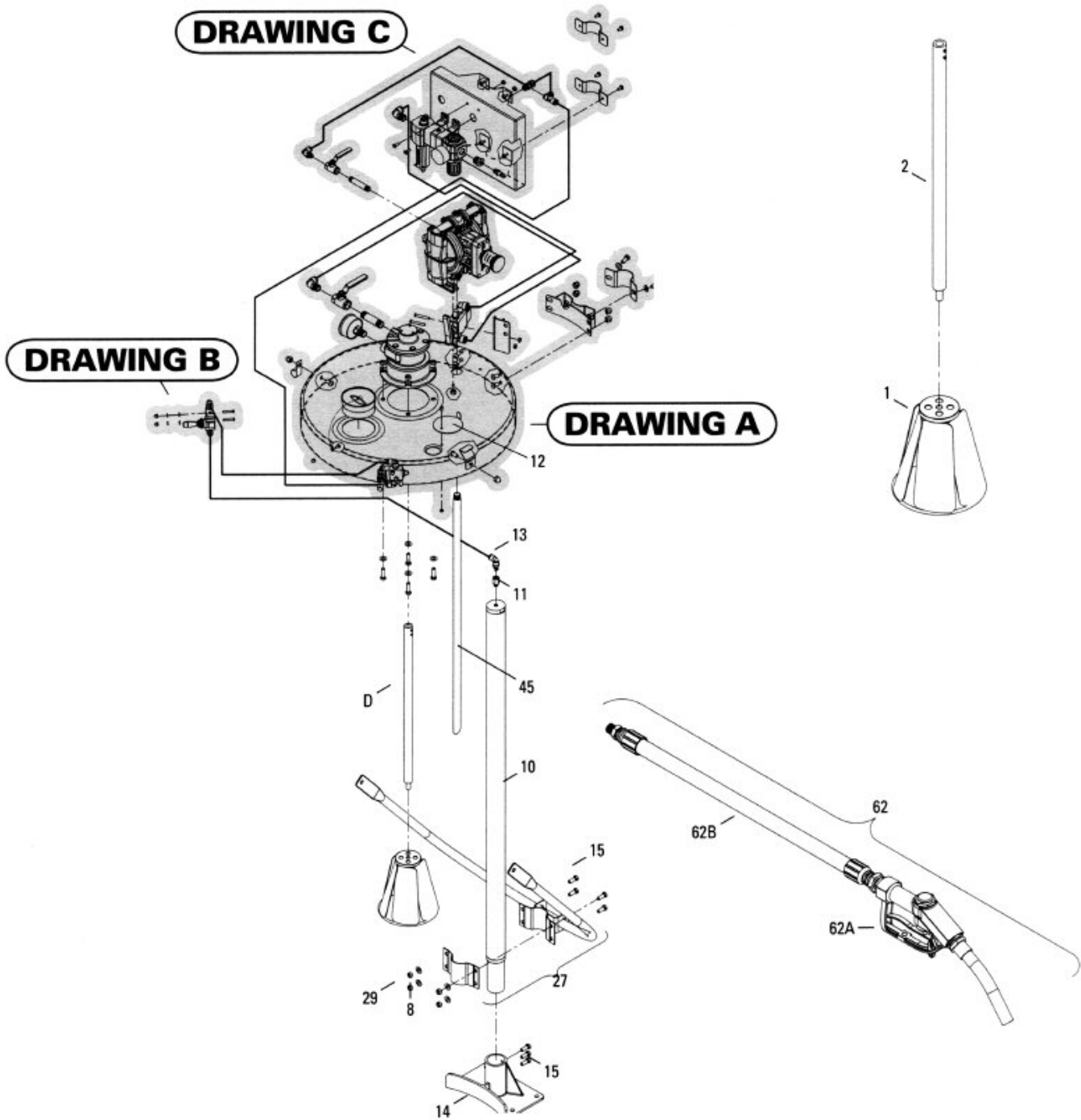


Item	Description	Qty.	P/N
1	AIR MOTOR .75 HP	1	JBW-7-BD
2	MOTOR ADAPTOR	1	JBW-51-BD
3	SHAFT	1	JBW-3-BD
4	IMPELLER CW	1	JBW-1-BD
5	1/4" BALL VALVE	1	JBW-7A-BD
6	1/4" PIPE NIPPLE	1	JBW-7B-BD
7	1/4" QUICK CONNECT	1	JBW-7C-BD
8	MUFFLER, AIR MOTOR	1	JBW-25-BD
N/S	OPTIONAL CCW IMPELLER	1	JBW-2-BD
N/S	OPTIONAL 1.5 HP AIR MOTOR	1	JBW-7-BD-1.5



## MIXING LIFT SYSTEM COMPLETE UNIT

Exploded View







# MIXING LIFT SYSTEM COMPLETE UNIT

## Parts Listing

Item	Description	Qty.	P/N
1	IMPELLER, CW	1	JBW-1
2	SHAFT, 22"	1	JBW-3
3	MOTOR, 4HP AIR (INCLUDING MUFFLER 3A)	1	JBW-7
3A	MUFFLER, AIR MOTOR	1	JBW-25
4	VALVE, 1/2" BALL	1	JBW-7A
5	NIPPLE, 1/2" NPT X 3" LG PIPE	1	JBW-7B
6	ELBOW, 1/2" NPT TO 1/2" O.D. TUBE SWIVEL	4	N/A
7	SCREW, 3/8-16 UNC-2A X 1.25 LG HHC	4	N/A
8	WASHER, 3/8" PLAIN	10	N/A
9	LOCKNUT, 3/8"-16 UNC-2B NYLON-INSERTED	4	N/A
10	CYLINDER, PNEUMATIC LIFT	1	JBW-L1
11	ORIFICE	1	JBW-L2
12	NOZZLE COVERPLATE	1	JBW-L29-CP
13	ELBOW, 1/4" NPT TO 3/8" O.D. TUBE SWIVEL	1	JBW-L2B
14	MOUNT, FLOOR	1	JBW-L3
15	SCREW, 3/8"-16 UNC-2A X 1.00 LG HHC	1	N/A
16	COVER, DRUM LIFT	1	JBW-L4
17	LID, DRUM LIFT COVER	1	JBW-L105
18	SCREW, #10-24 UNC-2A X .50 LG SOC BTN HD	1	N/A
19	LOCKNUT, #10-24 UNC-2B NYLON-INSERTED	2	N/A
20	PLUG, 3" PLASTIC INSPECTION	1	JBW-L14
21	SCREW, #10-24 UNC-2A X .50 LG HEX HD CAP	1	N/A
22	BRACKET, 55 GALLON DRUM STOP	1	JBW-110
23	SCREW, 3/8-16 UNC-2A X .75 LG SOC BTN HD	6	N/A
24	NUT, 3/8-16 UNC-2B LOW CROWN	6	N/A
25	GUIDE, TUBING	1	JBW-L115
26	BRACE, LIFT COVER	1	JBW-L5
27	LIFT ARM W / BRACKET	1	JBW-L6
28	CHAIN	1	N/A
29	NUT, 3/8-16 UNC-2B HEX	6	N/A
30	SWITCH, UP-DOWN SAFETY	2	JBW-L7
31	ELBOW, 1/8" NPT TO 3/8" O.D. TUBE SWIVEL	4	N/A
32	MUFFLER, 1/8" NPT EXHAUST	1	N/A

Item	Description	Qty.	P/N
33	PLUG, 1/8" NPT HEX	1	N/A
34	SCREW, # 10-24 UNC-2A X 1.25 LG SOC BTN HD	4	N/A
35	WASHER, #10 PLAIN	8	N/A
36	NUT, #10-24 UNC-2B LOW CROWN	4	N/A
37	BRACKET, SAFETY SWITCH	1	JBW-L120
38	SWITCH, SAFETY SHUT OFF	1	JBW-L8
39	ARM-LEVER, SAFETY	1	JBW-L8A
40	ELBOW, 3/8" NPT TO 1/2" O.D. TUBE SWIVEL	2	N/A
41	MUFFLER, 3/8" NPT EXHAUST	1	N/A
42	SCREW, 1/4-20 UNC-2A X 1.75 LG SOC BTN HD	2	N/A
43	LOCKNUT, 1/4-20 UNC-2A X 1.75 LG SOC BTN HD	4	N/A
44	PUMP, 1/2" WILDEN (NOT INCLUDED)	1	01-2652
45	TUBE, 1/2" SUCTION	1	JBW-L16
46	SCREW, 1/4-20 UNC-2A X .75 LG HEX HD CAP	4	N/A
47	WASHER, 1/4" PLAIN	4	N/A
48	NUT, 1/4-20 UNC-2B HEX	8	N/A
49	NIPPLE, 1/4" NPT X 3" LG PIPE	1	N/A
50	VALVE, 1/4" BALL	1	N/A
51	ELBOW, 1/4" NPT TO 3/8" O.D. TUBE SWIVEL	1	N/A
52	PANEL, CONTROL	1	JBW-L9
53	ASSEMBLY, REGULATOR/LUBRICATOR	1	JBW-L10
54	ELBOW, 1/2" NPT TO 1/2" O.D. TUBE SWIVEL	1	N/A
55	CONNECT, REGULATOR 1/4" NPT QUICK	1	N/A
56	ADAPTER, 3/8" NPT TO 3/8" O.D. TUBE	1	N/A
57	TEE, 3/8" O.D. TUBE UNION	1	N/A
58	SCREW, 1/4-20 UNC-2A X .75 LG SOC FLT CSK HD	2	N/A
59	SCREW, 1/4-20 UNC-2A X .50 LG HEX HD CAP	4	N/A
60	TUBING, 1/2" O.D. BLACK	3'-10"	N/A
61	TUBING, 3/8" O.D. BLACK	23'-0"	N/A
62	ASSEMBLY, DISPENSING NOSSLE AND HOSE(NOT INCLUDED)	1	JBW-100
62A	NOZZLE DISPENSING	1	JBW-L29
62B	HOSE, 42" DISPENSING	1	JBW-L28

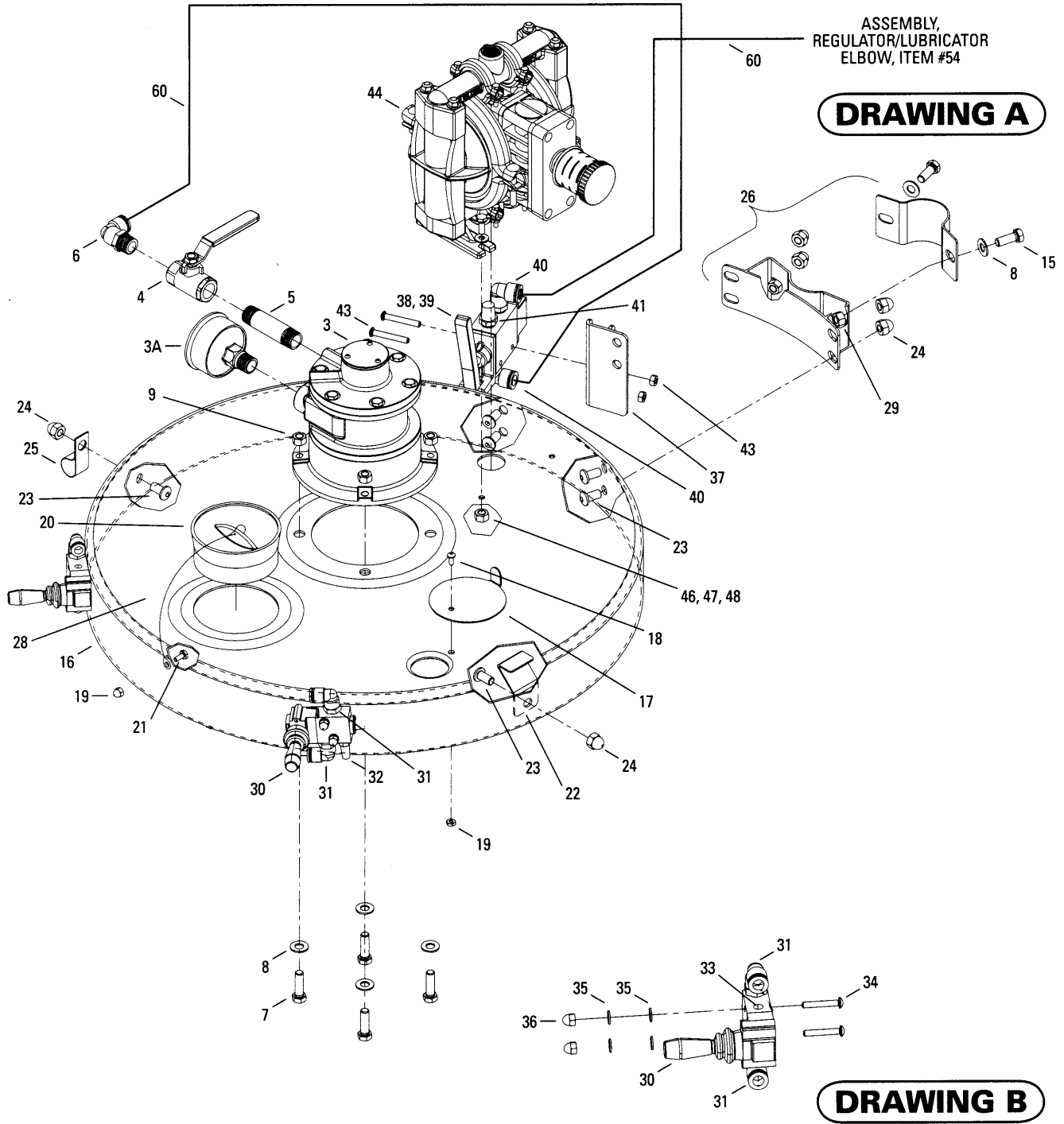
Note: Items which are listed as N/A are items easily obtainable through your local supplier. These items are not available through JBW.

Not applicable for this page



## MIXING LIFT SYSTEM COVER ASSEMBLY

### Exploded View





## MIXING LIFT SYSTEM COVER ASSEMBLY

### Drawings A & B Parts Listing

Item	Description	Qty.	P/N
1	IMPELLER, CW	1	JBW-1
2	SHAFT, 22"	1	JBW-3
3	MOTOR, 4HP AIR (INCLUDING MUFFLER 3A)	1	JBW-7
3A	MUFFLER, AIR MOTOR	1	JBW-25
4	VALVE, 1/2" BALL	1	JBW-7A
5	NIPPLE, 1/2" NPT X 3" LG PIPE	1	JBW-7B
6	ELBOW, 1/2" NPT TO 1/2" O.D. TUBE SWIVEL	4	N/A
7	SCREW, 3/8-16 UNC-2A X 1.25 LG HHC	4	N/A
8	WASHER, 3/8" PLAIN	10	N/A
9	LOCKNUT, 3/8"-16 UNC-2B NYLON-INSERTED	4	N/A
10	CYLINDER, PNEUMATIC LIFT	1	JBW-L1
11	ORIFICE	1	JBW-L2
12	NOZZLE COVERPLATE	1	JBW-L29-CP
13	ELBOW, 1/4" NPT TO 3/8" O.D. TUBE SWIVEL	1	JBW-L2B
14	MOUNT, FLOOR	1	JBW-L3
15	SCREW, 3/8"-16 UNC-2A X 1.00 LG HHC	1	N/A
16	COVER, DRUM LIFT	1	JBW-L4
17	LID, DRUM LIFT COVER	1	JBW-L105
18	SCREW, #10-24 UNC-2A X .50 LG SOC BTN HD	1	N/A
19	LOCKNUT, #10-24 UNC-2B NYLON-INSERTED	2	N/A
20	PLUG, 3" PLASTIC INSPECTION	1	JBW-L14
21	SCREW, #10-24 UNC-2A X .50 LG HEX HD CAP	1	N/A
22	BRACKET, 55 GALLON DRUM STOP	1	JBW-110
23	SCREW, 3/8-16 UNC-2A X .75 LG SOC BTN HD	6	N/A
24	NUT, 3/8-16 UNC-2B LOW CROWN	6	N/A
25	GUIDE, TUBING	1	JBW-L115
26	BRACE, LIFT COVER	1	JBW-L5
27	LIFT ARM W / BRACKET	1	JBW-L6
28	CHAIN	1	N/A
29	NUT, 3/8-16 UNC-2B HEX	6	N/A
30	SWITCH, UP-DOWN SAFETY	2	JBW-L7
31	ELBOW, 1/8" NPT TO 3/8" O.D. TUBE SWIVEL	4	N/A
32	MUFFLER, 1/8" NPT EXHAUST	1	N/A

Item	Description	Qty.	P/N
33	PLUG, 1/8" NPT HEX	1	N/A
34	SCREW, # 10-24 UNC-2A X 1.25 LG SOC BTN HD	4	N/A
35	WASHER, #10 PLAIN	8	N/A
36	NUT, #10-24 UNC-2B LOW CROWN	4	N/A
37	BRACKET, SAFETY SWITCH	1	JBW-L120
38	SWITCH, SAFETY SHUT OFF	1	JBW-L8
39	ARM-LEVER, SAFETY	1	JBW-L8A
40	ELBOW, 3/8" NPT TO 1/2" O.D. TUBE SWIVEL	2	N/A
41	MUFFLER, 3/8" NPT EXHAUST	1	N/A
42	SCREW, 1/4-20 UNC-2A X 1.75 LG SOC BTN HD	2	N/A
43	LOCKNUT, 1/4-20 UNC-2A X 1.75 LG SOC BTN HD	4	N/A
44	PUMP, 1/2" WILDEN (NOT INCLUDED)	1	01-2652
45	TUBE, 1/2" SUCTION	1	JBW-L16
46	SCREW, 1/4-20 UNC-2A X .75 LG HEX HD CAP	4	N/A
47	WASHER, 1/4" PLAIN	4	N/A
48	NUT, 1/4-20 UNC-2B HEX	8	N/A
49	NIPPLE, 1/4" NPT X 3" LG PIPE	1	N/A
50	VALVE, 1/4" BALL	1	N/A
51	ELBOW, 1/4" NPT TO 3/8" O.D. TUBE SWIVEL	1	N/A
52	PANEL, CONTROL	1	JBW-L9
53	ASSEMBLY, REGULATOR/LUBRICATOR	1	JBW-L10
54	ELBOW, 1/2" NPT TO 1/2" O.D. TUBE SWIVEL	1	N/A
55	CONNECT, REGULATOR 1/4" NPT QUICK	1	N/A
56	ADAPTER, 3/8" NPT TO 3/8" O.D. TUBE	1	N/A
57	TEE, 3/8" O.D. TUBE UNION	1	N/A
58	SCREW, 1/4-20 UNC-2A X .75 LG SOC FLT CSK HD	2	N/A
59	SCREW, 1/4-20 UNC-2A X .50 LG HEX HD CAP	4	N/A
60	TUBING, 1/2" O.D. BLACK	3'-10"	N/A
61	TUBING, 3/8" O.D. BLACK	23'-0"	N/A
62	ASSEMBLY, DISPENSING NOSSLE AND HOSE(NOT INCLUDED)	1	JBW-100
62A	NOZZLE DISPENSING	1	JBW-L29
62B	HOSE, 42" DISPENSING	1	JBW-L28

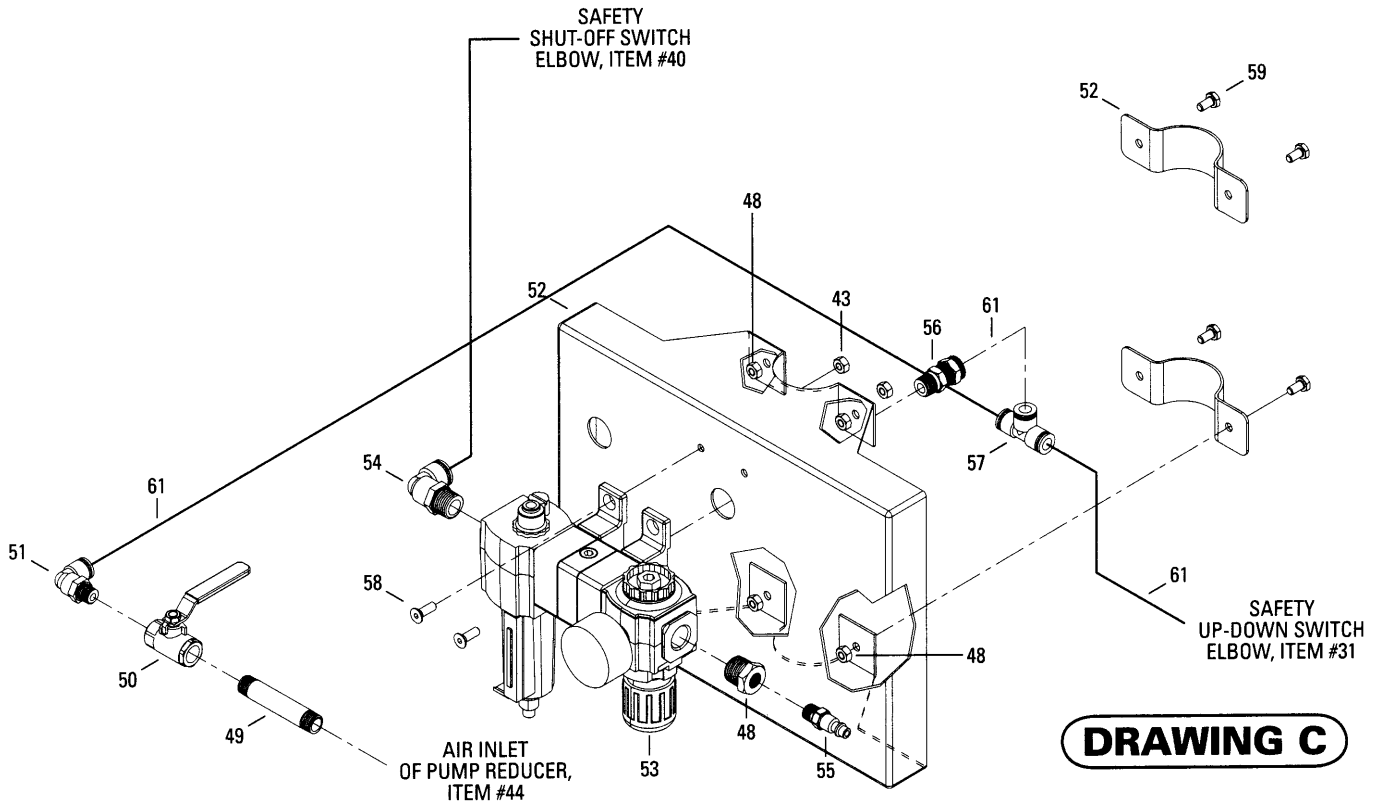
Note: Items which are listed as N/A are items easily obtainable through your local supplier. These items are not available through JBW.

Not applicable for this page



## MIXING LIFT SYSTEM CONTROL PANEL

### Exploded View





# MIXING LIFT SYSTEM CONTROL PANEL

## Drawings C Parts Listing

Item	Description	Qty.	P/N
1	IMPELLER, CW	1	JBW-1
2	SHAFT, 22"	1	JBW-3
3	MOTOR, 4HP AIR (INCLUDING MUFFLER 3A)	1	JBW-7
3A	MUFFLER, AIR MOTOR	1	JBW-25
4	VALVE, 1/2" BALL	1	JBW-7A
5	NIPPLE, 1/2" NPT X 3" LG PIPE	1	JBW-7B
6	ELBOW, 1/2" NPT TO 1/2" O.D. TUBE SWIVEL	4	N/A
7	SCREW, 3/8-16 UNC-2A X 1.25 LG HHC	4	N/A
8	WASHER, 3/8" PLAIN	10	N/A
9	LOCKNUT, 3/8"-16 UNC-2B NYLON-INSERTED	4	N/A
10	CYLINDER, PNEUMATIC LIFT	1	JBW-L1
11	ORIFICE	1	JBW-L2
12	NOZZLE COVERPLATE	1	JBW-L29-CP
13	ELBOW, 1/4" NPT TO 3/8" O.D. TUBE SWIVEL	1	JBW-L2B
14	MOUNT, FLOOR	1	JBW-L3
15	SCREW, 3/8"-16 UNC-2A X 1.00 LG HHC	1	N/A
16	COVER, DRUM LIFT	1	JBW-L4
17	LID, DRUM LIFT COVER	1	JBW-L105
18	SCREW, #10-24 UNC-2A X .50 LG SOC BTN HD	1	N/A
19	LOCKNUT, #10-24 UNC-2B NYLON-INSERTED	2	N/A
20	PLUG, 3" PLASTIC INSPECTION	1	JBW-L14
21	SCREW, #10-24 UNC-2A X .50 LG HEX HD CAP	1	N/A
22	BRACKET, 55 GALLON DRUM STOP	1	JBW-110
23	SCREW, 3/8-16 UNC-2A X .75 LG SOC BTN HD	6	N/A
24	NUT, 3/8-16 UNC-2B LOW CROWN	6	N/A
25	GUIDE, TUBING	1	JBW-L115
26	BRACE, LIFT COVER	1	JBW-L5
27	LIFT ARM W / BRACKET	1	JBW-L6
28	CHAIN	1	N/A
29	NUT, 3/8-16 UNC-2B HEX	6	N/A
30	SWITCH, UP-DOWN SAFETY	2	JBW-L7
31	ELBOW, 1/8" NPT TO 3/8" O.D. TUBE SWIVEL	4	N/A
32	MUFFLER, 1/8" NPT EXHAUST	1	N/A

Item	Description	Qty.	P/N
33	PLUG, 1/8" NPT HEX	1	N/A
34	SCREW, # 10-24 UNC-2A X 1.25 LG SOC BTN HD	4	N/A
35	WASHER, #10 PLAIN	8	N/A
36	NUT, #10-24 UNC-2B LOW CROWN	4	N/A
37	BRACKET, SAFETY SWITCH	1	JBW-L120
38	SWITCH, SAFETY SHUT OFF	1	JBW-L8
39	ARM-LEVER, SAFETY	1	JBW-L8A
40	ELBOW, 3/8" NPT TO 1/2" O.D. TUBE SWIVEL	2	N/A
41	MUFFLER, 3/8" NPT EXHAUST	1	N/A
42	SCREW, 1/4-20 UNC-2A X 1.75 LG SOC BTN HD	2	N/A
43	LOCKNUT, 1/4-20 UNC-2A X 1.75 LG SOC BTN HD	4	N/A
44	PUMP, 1/2" WILDEN (NOT INCLUDED)	1	01-2652
45	TUBE, 1/2" SUCTION	1	JBW-L16
46	SCREW, 1/4-20 UNC-2A X .75 LG HEX HD CAP	4	N/A
47	WASHER, 1/4" PLAIN	4	N/A
48	NUT, 1/4-20 UNC-2B HEX	8	N/A
49	NIPPLE, 1/4" NPT X 3" LG PIPE	1	N/A
50	VALVE, 1/4" BALL	1	N/A
51	ELBOW, 1/4" NPT TO 3/8" O.D. TUBE SWIVEL	1	N/A
52	PANEL, CONTROL	1	JBW-L9
53	ASSEMBLY, REGULATOR/LUBRICATOR	1	JBW-L10
54	ELBOW, 1/2" NPT TO 1/2" O.D. TUBE SWIVEL	1	N/A
55	CONNECT, REGULATOR 1/4" NPT QUICK	1	N/A
56	ADAPTER, 3/8" NPT TO 3/8" O.D. TUBE	1	N/A
57	TEE, 3/8" O.D. TUBE UNION	1	N/A
58	SCREW, 1/4-20 UNC-2A X .75 LG SOC FLT CSK HD	2	N/A
59	SCREW, 1/4-20 UNC-2A X .50 LG HEX HD CAP	4	N/A
60	TUBING, 1/2" O.D. BLACK	3'-10"	N/A
61	TUBING, 3/8" O.D. BLACK	23'-0"	N/A
62	ASSEMBLY, DISPENSING NOSSLE AND HOSE(NOT INCLUDED)	1	JBW-100
62A	NOZZLE DISPENSING	1	JBW-L29
62B	HOSE, 42" DISPENSING	1	JBW-L28

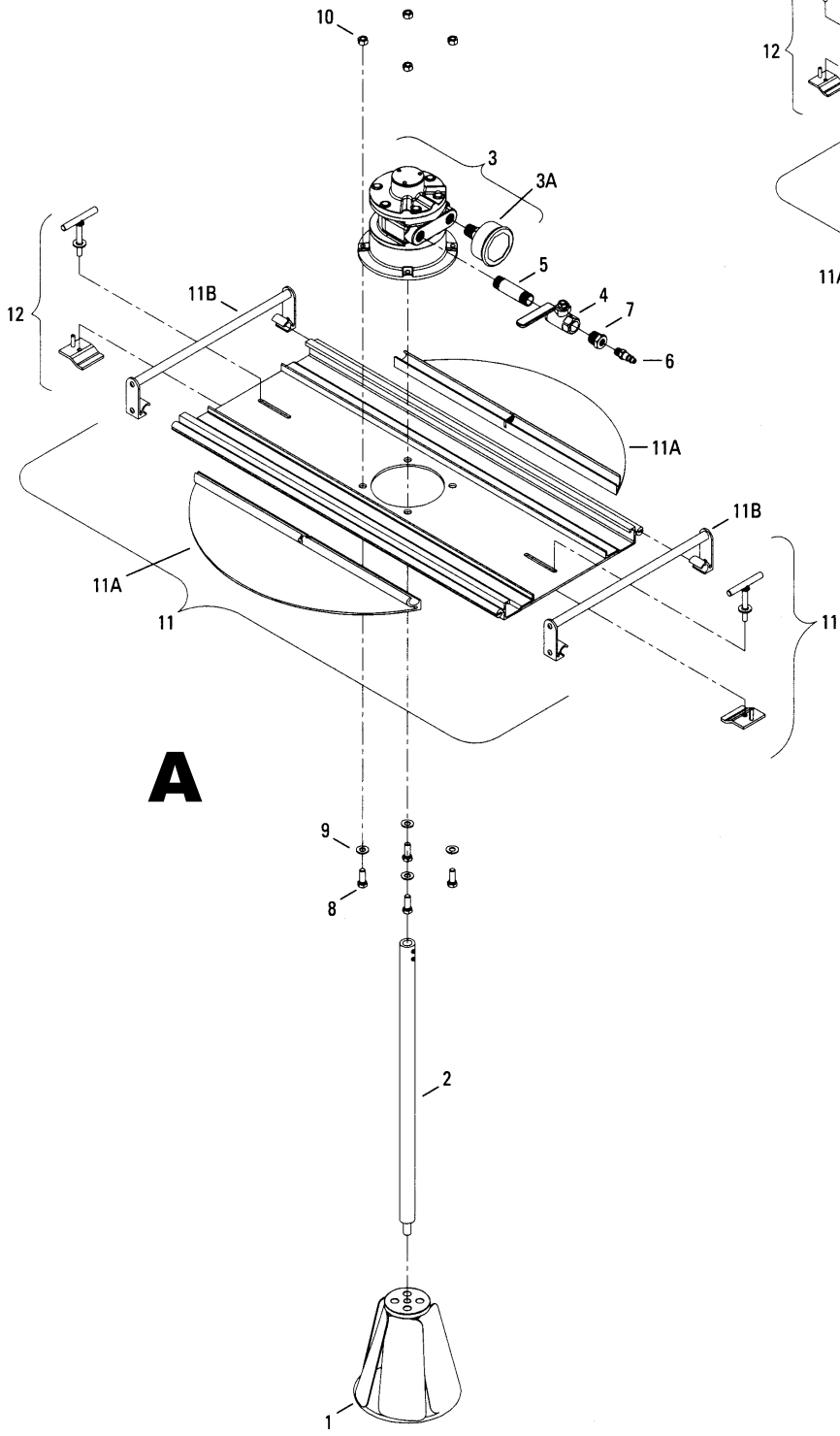
Note: Items which are listed as N/A are items easily obtainable through your local supplier. These items are not available through JBW.

Not applicable for this page

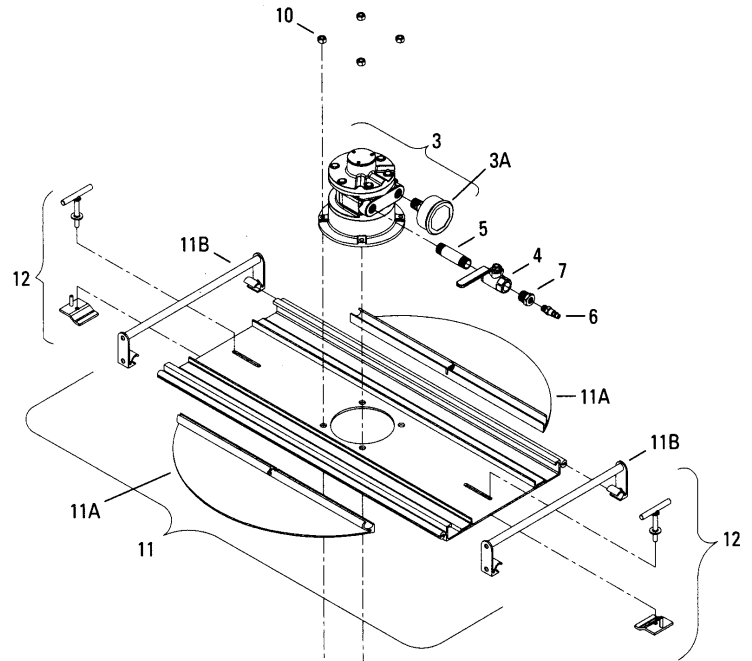


## PORTABLE DRUM MIXER

Exploded View COMPLETE UNIT  
PARTS LIST **A** (see page 21)



**A**



**B**

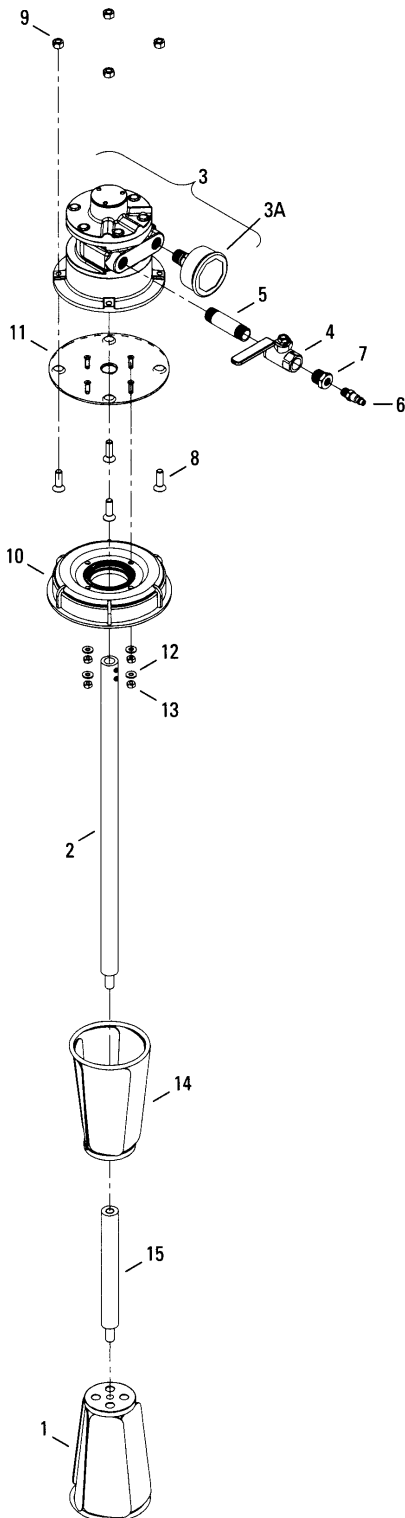
## PORTABLE TOTE® MIXER

Exploded View COMPLETE UNIT  
PARTS LIST **B** (see page 21)



# PORTABLE SLIMLINE TOTE® MIXER

## Exploded View COMPLETE UNIT PARTS LIST C



**C**

Item	Description	Qty.	P/N
1	IMPELLER, CW	1	JBW-1
2	SHAFT, 22:	1	JBW-3
3	MOTOR, 4HP AIR	1	JBW-7
3A	MUFFLER, AIR MOTOR	1	JBW-25
4	VALVE, 1/2" BALL	1	JBW-7A
5	NIPPLE, 1/2" NPT X 3" LG PIPE	1	JBW-7B
6	CONNECT, 1/4" NPT QUICK	1	JBW-7C
7	BUSHING 1/2" NPT(M) TO 1/4" NPT(F) REDUCER	1	N/A
8	SCREW, 3/8-16 UNC-2A X 1.25 LG HHC	4	N/A
9	WASHER, 3/8" PLAIN	4	N/A
10	LOCKNUT, 3/8-16 UNC-2B NYLON-INSERTED	4	N/A
11	ASSEMBLY, DRUM COVER	1	JBW-10
11A	FLAP	1	JBW-14
11B	ASSEMBLY, DRUM COVER HANDLE	1	JBW-11
12	ASSEMBLY, DRUM CLAP T-HANDLE	1	JBW-12

**A**

Item	Description	Qty.	P/N
1	IMPELLER, CW	1	JBW-1
2	SHAFT, 22"	1	JBW-3
3	MOTOR, 4 HP AIR	1	JBW-7
3A	MUFFLER, AIR MOTOR	1	JBW-25
4	VALVE, 1/2" BALL	1	JBW-7A
5	NIPPLE, 1/2" NPT X 3" LG PIPE	1	JBW-7B
6	CONNECT, 1/4" NPT QUICK	1	JBW-7C
7	BUSHING, 1/2" NPT (M) TO 1/4" NPT (F) REDUCER	1	N/A
8	SCREW, 3/8-16 UNC-2A X 1.25 LG HHC	4	N/A
9	WASHER, 3/8: PLAIN	4	N/A
10	LOCKNUT, 3/8-16 UNC-2B NYLON-INSERTED	4	N/A
11	ASSEMBLY, DRUM COVER	1	JBW-10
11A	FLAP	1	JBW-14
11B	ASSEMBLY, DRUM COVER HANDLE	2	JBW-11
12	ASSEMBLY, DRUM CLAMP T-HANDLE	2	JBW-12
13	IMPELLER, CCW	1	JBW-2
14	SHAFT EXTENSION, 8"	1	JBW-4

**B**

Item	Description	Qty.	P/N
1	IMPELLER, CW, SLIMLINE	1	JBW-8
2	SHAFT, 22"	1	JBW-3
3	MOTOR, 4HP AIR	1	JBW-7
3A	MUFFLER, AIR MOTOR	1	JBW-25
4	VALVE, 1/2" BALL	1	JBW-7A
5	NIPPLE, 1/2" NPT X 3" LG PIPE	1	JBW-7B
6	CONNECT, 1/4" NPT QUICK	1	JBW-7C
7	BUSHING, 1/2" NPT(M) TO 1/4" NPT(F) REDUCER	4	N/A
8	SCREW, 3/8-16 UNC-2A X 1.25 LG SOC FLT CSK HD	4	N/A
9	LOCKNUT, 3/8-16 UNC-2B NYLON-INSERTED	4	N/A
10	CAP, TOTE	1	JBW-50
11	ADAPTER PLATE, AIR MOTOR	1	JBW-51
12	WASHER, 1/4" PLAIN	4	N/A
13	LOCKNUT, 1/4-20 UNC-2B NYLON-INSERTED	4	N/A
14	IMPELLER, CCW, SLIMLINE	1	JBW-9
15	SHAFT EXTENSION, 8"	1	JBW-4

**C**

Note: Items which are listed as N/A are items easily obtainable through your local supplier. These items are not available through JBW.



**JBW BUNG/DRUM MIXER**

- Low weight – less than 15 pounds
- JBW conical impeller for 2-3/4" bung hole
- 3/4 HP pneumatic air motor

**OPTIONAL:**

- 1 1/2 HP pneumatic air motor
- Extra impeller



**JBW STANDARD TOTE® MIXER**

- Weight is less than 50 pounds
- Unique cover with inspection flaps
- 4 HP pneumatic air motor
- Extra shaft extensions available for taller tanks



**JBW SlimLine TOTE® MIXER**

- Approximate weight, 30 pounds
- Two slim conical impellers for 6" opening
- Uses plastic cap with motor adapter plate
- 4 HP pneumatic air motor
- Extra shaft extensions available for taller tanks
- 22" system shaft and 8" shaft extension
- Extra impellers available for higher viscosity



**JBW MIXING LIFT SYSTEM for drums**

- Pneumatic vertical lift
- Control panel with air regulator/lubricator
- Stainless steel

- Fully assembled ready to bolt to floor
- Multiple safety features

**OPTIONAL:**

- 1/2" pump
- Hose and nozzle



**JBW PORTABLE DRUM MIXER**

- Approximate weight, 43 pounds
- Unique cover with inspection flaps
- Easily transported from drum to drum
- 4HP pneumatic air motor



**For additional information contact:**

614.882.5008 • fax: 614.882.5004

e-mail: [jbwsystems@msn.com](mailto:jbwsystems@msn.com)

[www.jbwsystems.com](http://www.jbwsystems.com)